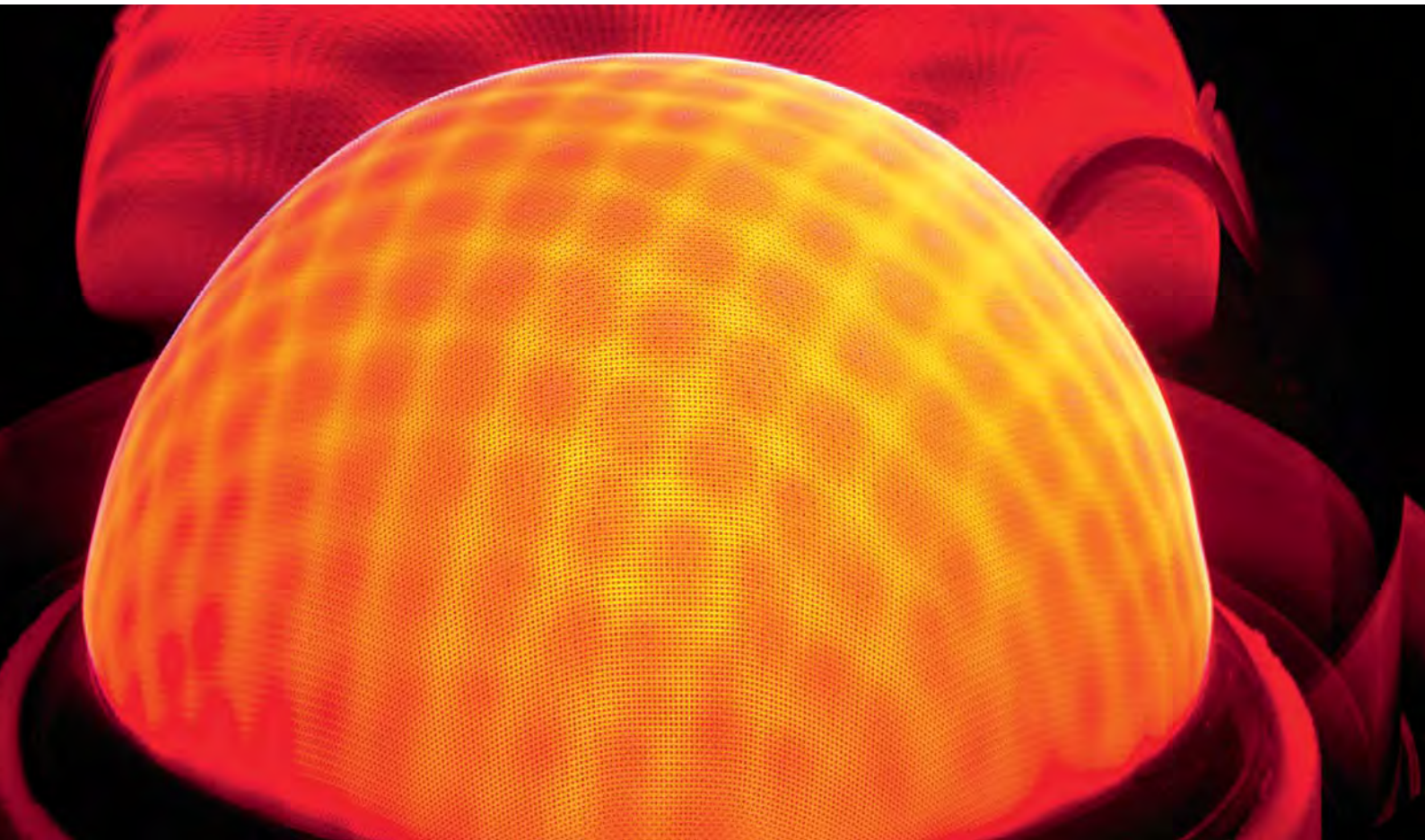


Heating with gas



**VIESSMANN**

## Heating with gas – always a clean affair

On the following pages, you will find extensive information about the various technologies available to you today to generate heat using natural gas in your house or apartment.

By using a condensing boiler to convert natural gas into heat, you are making an active contribution towards protecting the climate and the environment, thanks to the boiler's unbeatable high efficiency of 98 percent.

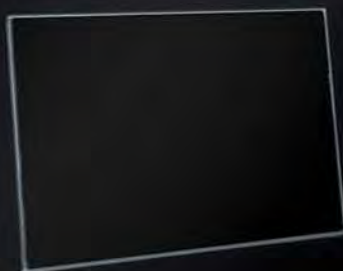
Our gas condensing boilers come with the future built in. Thanks to the Lambda Pro Control combustion control, our gas condensing boilers adjust automatically to all gas types – including biogas mixtures. This way, we will meet the many demands for heating technologies across the whole product range that protect our resources.

The fact that no energy storage is necessary is also an argument in favour of a gas heating system – especially if you want to use the space for other purposes.

You can even use free solar energy for your new heating system! All boilers are designed for combination with Viessmann solar technology. Viessmann system technology guarantees that everything will fit together beautifully and work in harmony, giving you convenient control that meets all your needs.



VIESMANN



## About this brochure

The Viessmann gas boiler range will fulfil your every demand for an efficient and economical heating system. This brochure will tell you about our current boilers, and contains plenty of other facts about accessories, service, opportunities for subsidies and financial options.



### Saving energy and protecting the climate

from page 6

Find out why it is worth modernising your heating system now, so you can make an active contribution towards protecting the climate and use less fossil fuel.



### Gas condensing technology

from page 14

The gas condensing boilers from the Vitodens and Vitocrossal series offer the best energy utilisation with economical consumption. This offers you maximum savings!



### A perfect match: System technology

from page 42

Viessmann system technology includes all the elements of a reliable heating system, such as the Vitotronic control unit and Vitocell DHW cylinders to high-grade solar technology for cost-effective central heating backup, or photovoltaic modules for generating power.



### Accessories – everything from a single source

from page 54

You can trust Viessmann quality when it comes to accessories, too. Our Vitoset program includes a wide range of radiators, thermostatic valves, and much more.

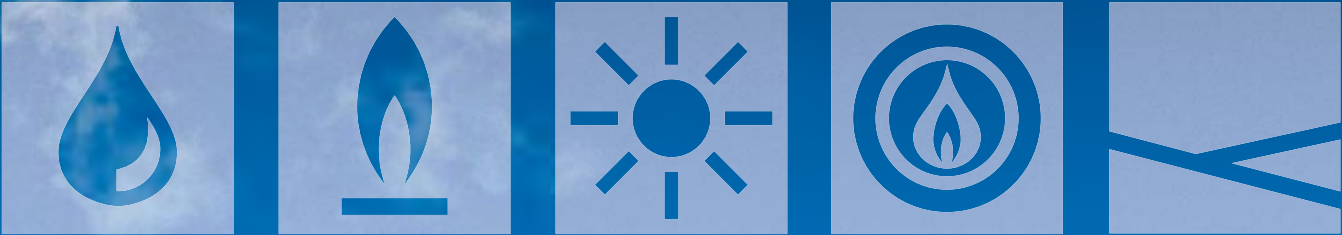


### Service for every aspect of heating

from page 58

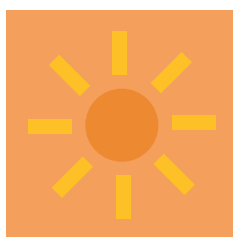
Make the most of our trade partners. They will tell you all you need to know about tailor-made heating technology, subsidy opportunities and financial options, without obligation and free of charge.





## Saving energy and protecting the climate

Viessmann is aware of its responsibility for the sustained protection of the environment. Its company philosophy and products focus on this.



"Nothing is so good that it cannot be improved." This maxim is at the heart of the company's principles. In its industry, Viessmann can rightfully claim to be the leader in quality and technology, and as such, we aim to keep setting new standards.

Of course, this applies in particular to the company's product range, which is consistently geared towards significantly lowering the consumption of fossil fuels, and gradually replacing them with renewable sources of energy.

At around 40 percent, the "heating market" actually accounts for the largest proportion of energy consumption. The rest is shared by "goods transport", "personal transport" and "power", with 20 percent each. These are values that can also be applied, to some extent, to other industrial countries. Ever-rising energy costs mean that the emphasis is on reducing the consumption of fossil fuels as quickly as possible.

### Condensing technology offers the greatest energy efficiency

Taking the overall investment and current energy prices into consideration, condensing technology is the most economical alternative. Viessmann gas condensing boilers convert up to 98 percent of the natural gas used into heat. At the same time, condensing technology is also futureproof, as biofuels such as bio-natural gas can already be mixed with conventional fuels.

This is why you should invest today in advanced condensing technology. The savings you can make through this are considerable. Make an effective contribution towards the sustained protection of the climate by preventing unnecessary CO<sub>2</sub> emissions.

Viessmann has the right solution for you, too!

Viessmann offers you energy-efficient heating systems for oil, gas, solar, biomass and natural heat. The pictograms will help to guide you.

# Did you know?

**Good reasons for modernising your heating system and using efficient gas condensing technology.**

In Germany alone, there are still around two million heating systems in use that are over 25 years old. Their owners are often completely unaware of how much money they are wasting unnecessarily on energy, which is pointlessly burned up and goes out of the chimney as unused heat. Furthermore, these old systems have an impact on the climate through unnecessary CO<sub>2</sub> emissions which contributes to global warming.

By promptly replacing these systems with highly efficient condensing boilers in combination with solar technology, end users can cut down on energy usage by up to 25 percent. This would work out to be 10 percent of Germany's total energy consumption, with annual CO<sub>2</sub> emissions being reduced by 54 million tonnes at the same time.

### **Central heating backup with solar power**

The free energy from the sun is still not used enough for central heating backup and DHW heating. When modernising, you should consider combining your new heating system or boiler with a solar thermal system. These systems are subsidised by public grant programmes, and will only take a few years to pay for themselves because of the large amount of energy they save.

### **How to save with condensing technology**

With condensing technology, not only is the heat from the combustion of gas utilised, but also the heat that would escape unused up the chimney with conventional heating technology.

Condensing boilers extract almost all of the heat contained in the flue gases and convert it into additional heating energy. To do this, Viessmann condensing boilers are equipped with stainless steel Inox-Radial heat exchangers, which cool the flue gases before they are routed into the stack, to the extent that the water vapour contained within them is deliberately condensed, and the additional heat released is transferred into the heating system.

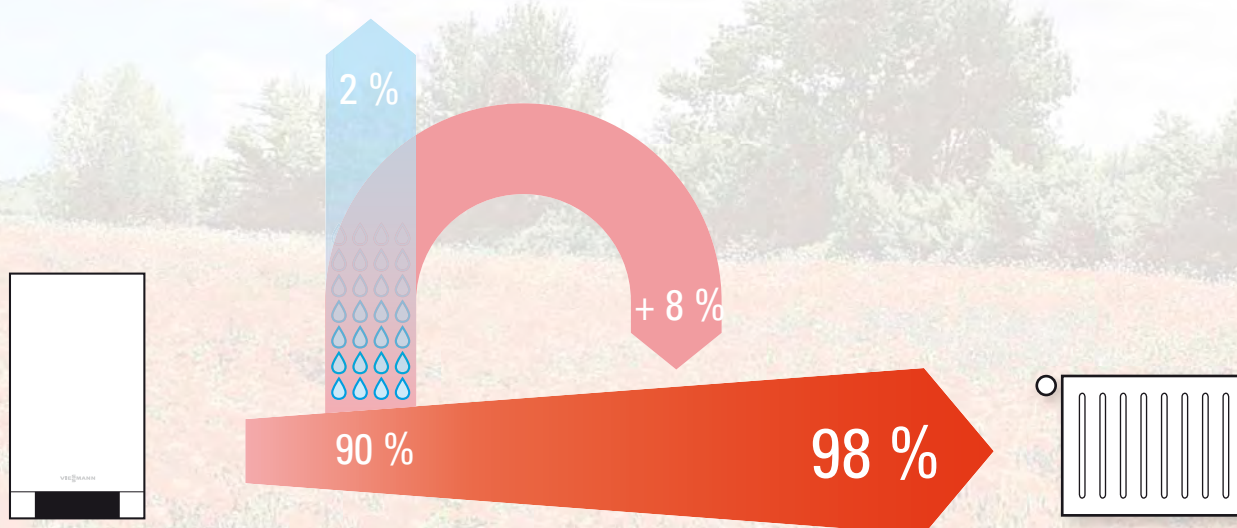
With this technology, condensing boilers achieve a standard seasonal efficiency [to DIN] of up to 98 percent, and so are particularly energy-efficient. This function not only saves valuable energy, but also protects the environment through significantly reduced CO<sub>2</sub> emissions.



Viessmann gas condensing boilers are prepared for the use of bio-natural gas.



More effective, more economical and lower emissions – modern gas condensing technology from Viessmann



#### How condensing technology works

Viessmann boilers with condensing technology achieve efficiencies of up to 98 percent (relative to  $H_2$ ). Through the condensation of the water vapour contained in the flue gas, additional heat is extracted from the flue gas and added back into the heating system. This increases the efficiency and lowers your heating costs and the environmental impact.





## An investment that pays off

### Optimum output for any living space.

If you are planning a new build or modernisation project, you should factor in the right heating system for your requirements in plenty of time.

You can save a lot of money by calculating your actual demand before selecting the boiler. The small boiler range includes gas condensing boilers in output stages from 3.8 to 142 kW, and gas low temperature boilers from 10.5 to 144 kW. From the small apartment to the apartment block, the Viessmann range always has the right solution.

### Heating economically

With efficient gas condensing technology from Viessmann, heating is particularly economical thanks to low investment costs and low consumption.

Furthermore, we recommend supplementing your new heating system with a solar thermal system for central heating backup and DHW provision. Thanks to Viessmann system technology, you can get everything from a single source.

# Modernise your heating system

Start saving money straight away.

Whichever heat source you choose – you'll definitely save a lot of money! The examples below clearly show the options available to you with the Viessmann range of gas condensing boilers and the use of solar thermal collectors from Viessmann:

## Modernising with a condensing boiler for gas



Energy savings

**26 % (€650 p.a.)**

Cost savings (15 years)\*

**€14,000**

CO<sub>2</sub> savings\*\*

**27 t**



## In addition for modernisation with a solar thermal system for DHW heating



Additional energy savings

**6 % (€160 p.a.)**

Additional cost savings (15 years)\*

**€3500**

Additional CO<sub>2</sub> savings\*\*

**7.5 t**



## In addition for modernisation with a solar thermal system for DHW heating and central heating backup



Additional energy savings

**13 % (€330 p.a.)**

Additional cost savings (15 years)\*

**€7100**

Additional CO<sub>2</sub> savings\*\*

**17 t**



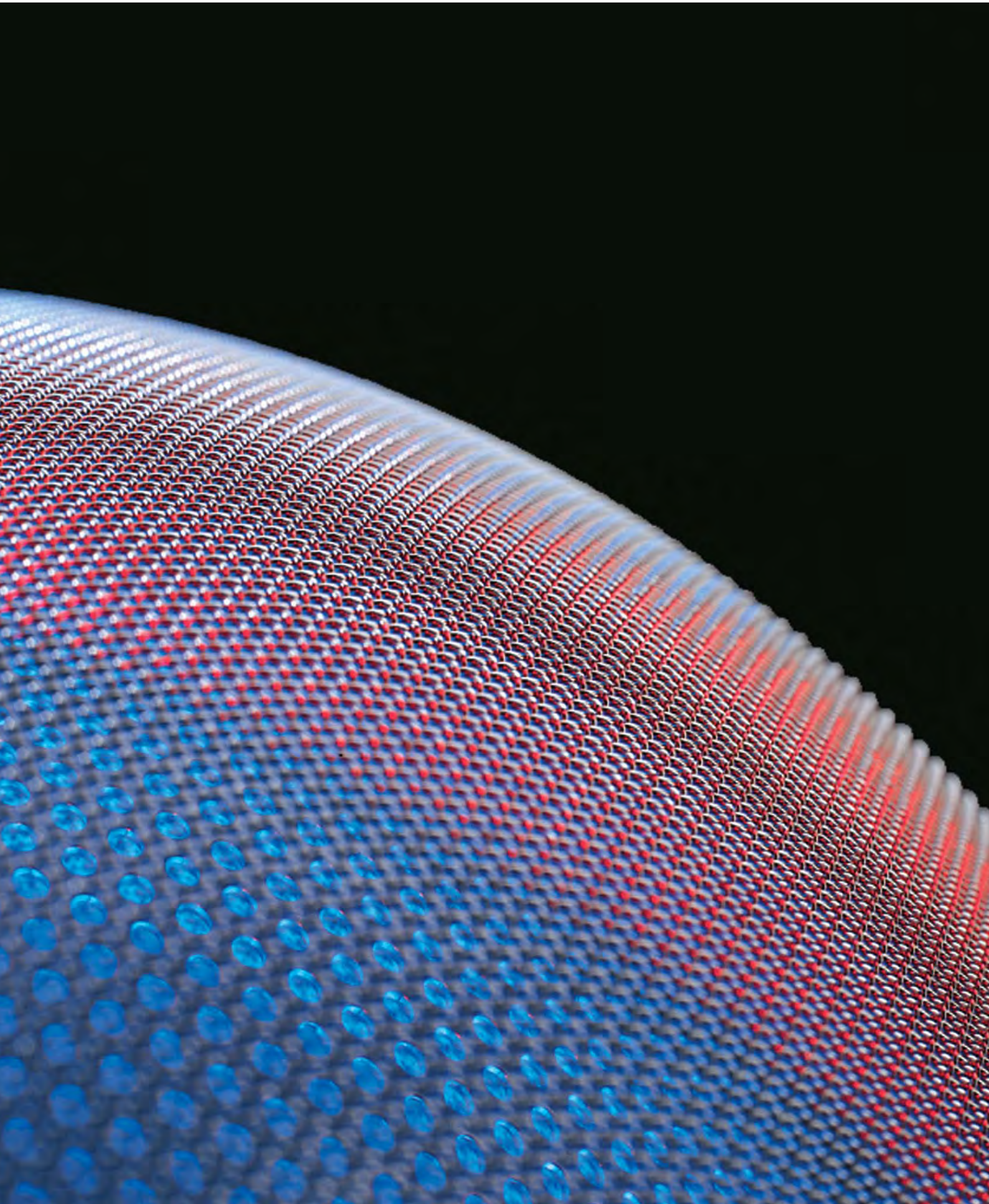
Rounded consumption and operating costs when using BDH and standard values (EID). Current information at [www.viessmann.de](http://www.viessmann.de).

Basis for comparison: Building with 140 m<sup>2</sup>, built in 1980 (house + old boiler, 27 kW). Consumption costs: €2450 at 3400 m<sup>3</sup> gas. Energy price (average figures): Gas: €0.72/m<sup>3</sup>.

\* Savings on the cost of energy after 15 years, allowing a 5 percent rise in energy prices per year.

\*\* Calculated over 15 years.





## Viessmann sets standards

Over the 90 plus years that Viessmann has been in business, the company has regularly set milestones in the development of the most advanced heating technology.

Viessmann has been a leader in the heating technology industry for years. Through continual innovation, the efficiency achieved when converting energy into heat has been increased to the limit of that which is currently technically possible. At the same time, we have been able to drastically reduce the levels of energy consumption and the CO<sub>2</sub> emissions of our boilers.

### Heating surfaces made from stainless steel

All Viessmann gas condensing boilers are now equipped with the stainless steel Inox-Radial heat exchanger. This indestructible technology brings with it an extremely high 98 percent efficiency, and excels through its safe and efficient operation during its long service life.

### MatriX burner is a milestone

The stainless steel Inox-Radial heat exchanger in combination with the MatriX gas burner together ensure high energy efficiency and a high level of heating convenience for the long-term. Furthermore, this technology saves on heating costs and effectively minimises emissions. Thanks to the Lambda Pro Control combustion controller, Viessmann gas condensing boilers are already designed to meet future standards, as they can be fired with different gas types and partial mixtures of biogas.

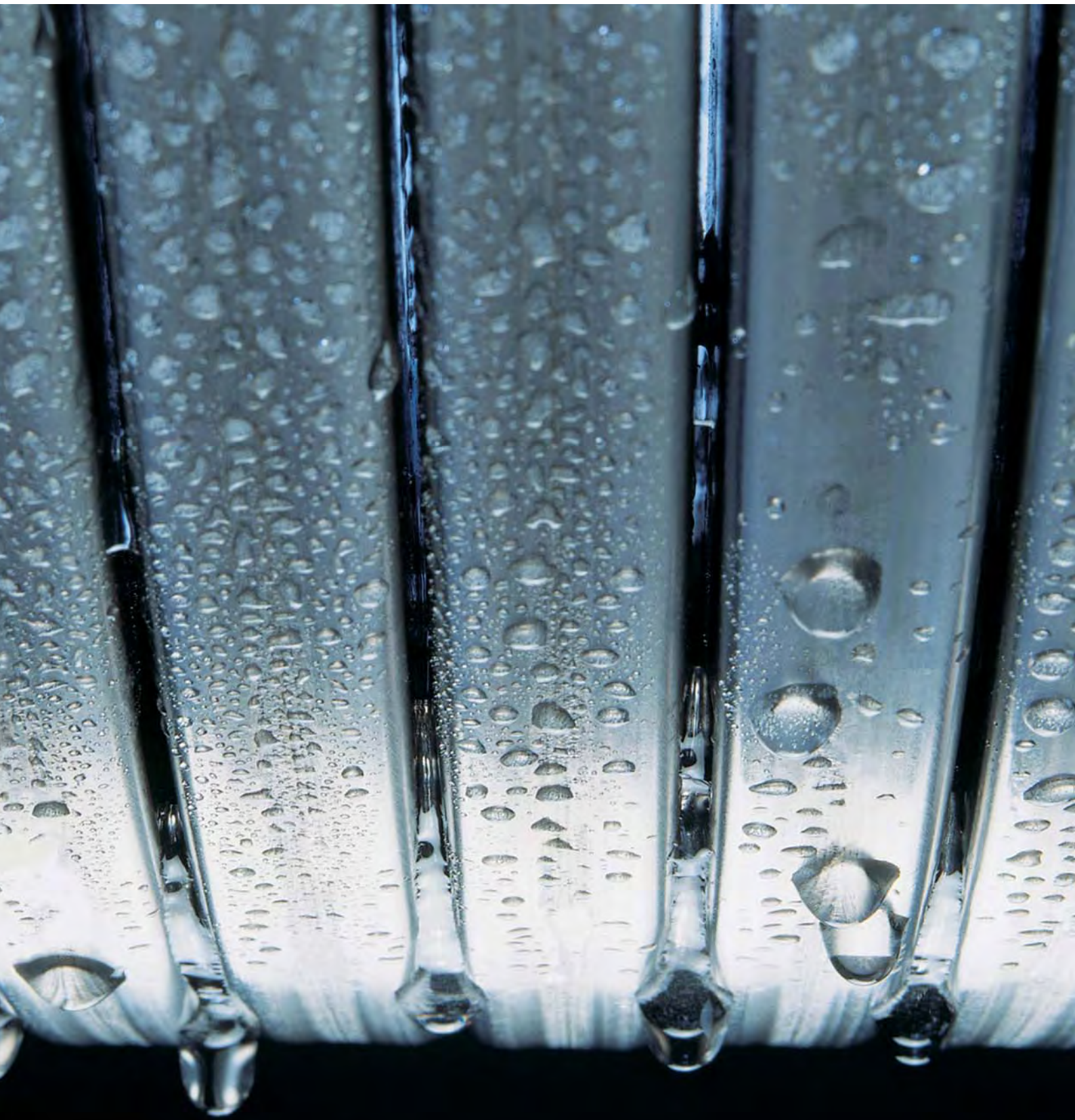
### Prize-winning design

At Viessmann, top technology and an attractive design make a harmonious combination. The company has received more than 40 significant design prizes from all over the world for its products in recent years. Viessmann boilers have been awarded the renowned red dot design award six times.



Viessmann wall mounted gas condensing boilers are characterised by their functional design.







# VITOCROSSAL VITODENS

You could spend a long time thinking about how futureproof your heating system is, or you could just switch it over to the future – right now.

With Viessmann gas condensing technology, the heating technology of tomorrow is already available today. It is one of the most economical and clean ways to generate heat. Through the condensation of the hot gases, latent heat is recovered which is lost by conventional boilers.

## Always the right choice

By choosing a Vitodens or Vitocrossal gas condensing boiler, you'll always be on the safe side. There are plenty of reasons in its favour:

- High reliability
- Long service life
- Convenient central and DHW heating
- Cost savings through economical energy consumption
- Perfectly matching combination with solar technology
- Attractive subsidies through government programmes

A milestone of innovative heating technology: The use of high-alloy stainless steel. Shown here with our Inox-Radial heat exchanger.



### Vitocrossal 300

Gas condensing boiler  
Output range: 27 to 142 kW  
**Page 16**



### Vitodens 343-F

Gas condensing storage combi boiler with stainless steel solar primary cylinder.  
Output range: 3.8 to 19 kW  
**Page 20**



### Vitodens 333-F

Storage combi boiler, with either stainless steel primary store or enamelled DHW cylinder with internal indirect coils.  
Output range: 3.8 to 26 kW  
**Page 24**



### Vitodens 300-W

Wall mounted gas condensing boiler  
Output range: 3.8 to 35 kW  
**Page 28**



### Vitodens 222-F

Gas condensing storage combi boiler with enamelled primary store.  
Output range: 4.8 to 35 kW  
**Page 32**



### Vitodens 222-W

Wall mounted gas condensing boiler with stainless steel primary store.  
Output range: 4.8 to 35 kW  
**Page 36**



### Vitodens 200-W

Wall mounted gas condensing boiler, system boiler: 4.8 to 105 kW, in cascades up to 420 kW, combi boiler: 6.5 to 35 kW  
**Page 36**

Gas condensing  
technology

Vitocrossal 300



# VITOCROSSAL 300

Top technology for top quality – this floorstanding gas condensing boiler will meet all your needs.

Top Viessmann technology provides first-class convenience and quality throughout the product range. This includes the MatriX gas burner with minimum emissions and our corrosion-resistant Inox-Crossal heating surfaces made from stainless steel. This quality permeates all Viessmann system technology right into the smallest detail of every heating system.

## **Condensing technology – for new build and renovation**

Today, using a condensing boiler in new buildings is highly advisable, because boiler and heating system can be perfectly matched right from the start. A condensing boiler brings the most benefit when it is installed in heating systems with low system temperatures.





Inox-Crossal heating surface

#### **Inox-Crossal heating surface and MatriX burner**

The Vitocrossal 300 is a leading product amongst floorstanding gas condensing boilers. The combination of the Inox-Crossal heat exchanger surface with the MatriX gas burner is a milestone in Viessmann heating technology. It saves heating costs and guarantees minimum emissions without compromise.

#### **Particularly suitable for local heating networks, apartment buildings and commercial buildings**

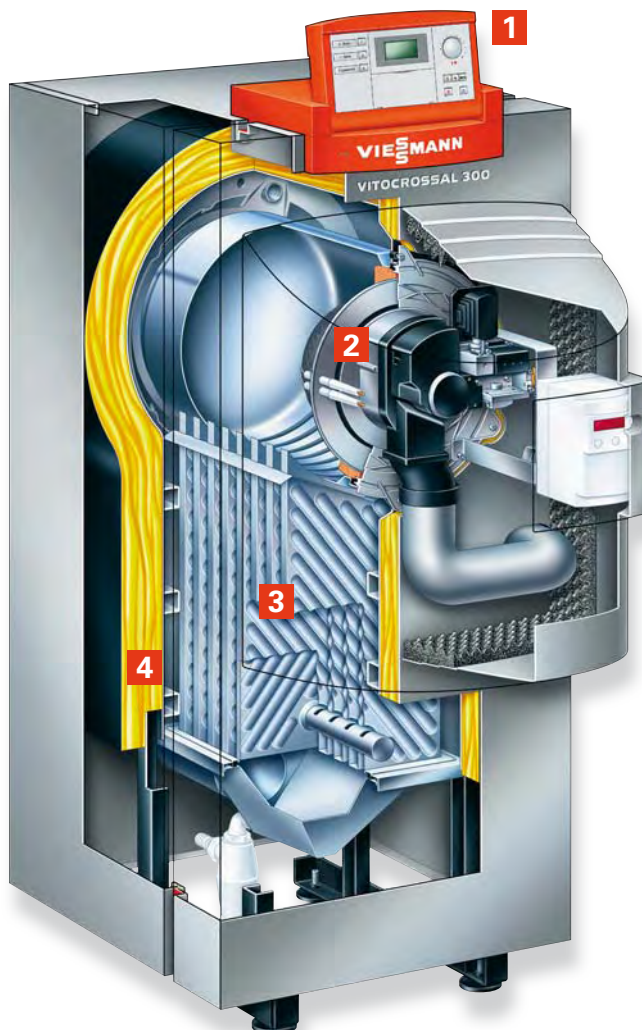
The Vitocrossal 300 range of condensing boilers offers the right solution for every demand – for apartment buildings as well as local heating networks and public or commercial buildings.

#### **Intensive utilisation of the heating gases**

With its structure comprising vertically arranged heating surfaces, the Vitocrossal 300 utilises the condensation energy in its heating gases particularly intensively. This results in efficiency of up to 98 percent.

In the output stage up to 66 kW, balanced flue operation is possible, and allows flexible installation of the condensing boiler inside the building.

Furthermore, the Vitocrossal 300 is also available for larger heating requirements in an output range up to 142 kW.

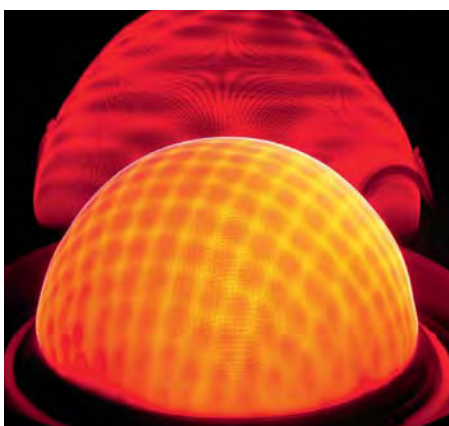


#### **Vitocrossal 300**

- 1** Vitotronic control unit
- 2** MatriX gas burner
- 3** Inox-Crossal stainless steel heat exchanger surfaces
- 4** Highly effective thermal insulation



The Vitocrossal 300 in combination with the Vitocell 300-V DHW cylinder.



A milestone in heating technology: the MatriX gas burner for extremely clean combustion.

#### Take advantage of these benefits

- Gas condensing storage combi boiler with large water content, 27 to 142 kW
- Standard seasonal efficiency [to DIN] up to 98 % ( $H_g$ ) / 109 % ( $H_i$ )
- Inox-Crossal stainless steel heat exchanger surfaces for an efficient utilisation of condensing technology
- Modulating MatriX gas burner for particularly quiet and environmentally responsible operation
- Balanced flue operation
- A strong draught in the flue outlet enables long flue pipe lengths
- Coaxial flue gas system

For the specification, see pages 40/41.



Gas condensing  
technology

Vitodens 343-F





# VITODENS 343-F

Ready-to-connect compact boiler with integral solar DHW heating.

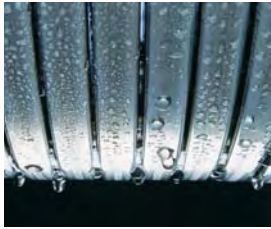
For modern heating with condensing and solar technology in detached houses, the Vitodens 343-F is an extremely energy-efficient, environmentally responsible and advanced heating system.

With a floor area of just 0.4 m<sup>2</sup>, this all-in-one solution takes up only a very small amount of space, and so can fit into any recess. Furthermore, all components for installation and maintenance are accessible from the front. And last but not least, the Vitodens 343-F gas condensing boiler is both quiet as a whisper and highly efficient.

The Vitodens 343-F storage combi boiler offers energy-saving condensing technology, powerful DHW heating through a primary store system, and full preparation for solar heating, all inside one casing.

## **Futureproof through solar integration**

The Vitodens 343-F is fully prepared for combination with Vitosol solar collectors, either now or in the future. The control module for regulating the solar thermal system is already integrated; the solar yield is displayed graphically by the device. All functions are matched to one another and have been factory tested.



Inox-Radial heat exchanger

#### High heating and DHW convenience including solar integration

The Vitodens 343-F gas condensing storage combi boiler is specifically designed for new build and for modernisation in detached houses. The Vitodens 343-F is already equipped for the direct connection of a solar thermal system as standard. The appliance for installing tight against the wall offers high DHW convenience, as the dual mode stainless steel DHW cylinder features a capacity of 220 litres. Compared to the predecessor model, this compact appliance can be split for easier handling. In addition, weight was significantly reduced.

#### New control unit

The new Vitotronic control unit features self-explanatory user prompts. If in doubt, help with the next input steps is available at the push of a button. The graphic interface will also display heating curves and solar yield. The control module for regulating the solar thermal system is already integrated. An easily accessible interface for the connection of the collector temperature sensor is available.

A 5 metre long cable enables the removable programming unit to be mounted almost anywhere in a convenient position inside a wall mounting base.

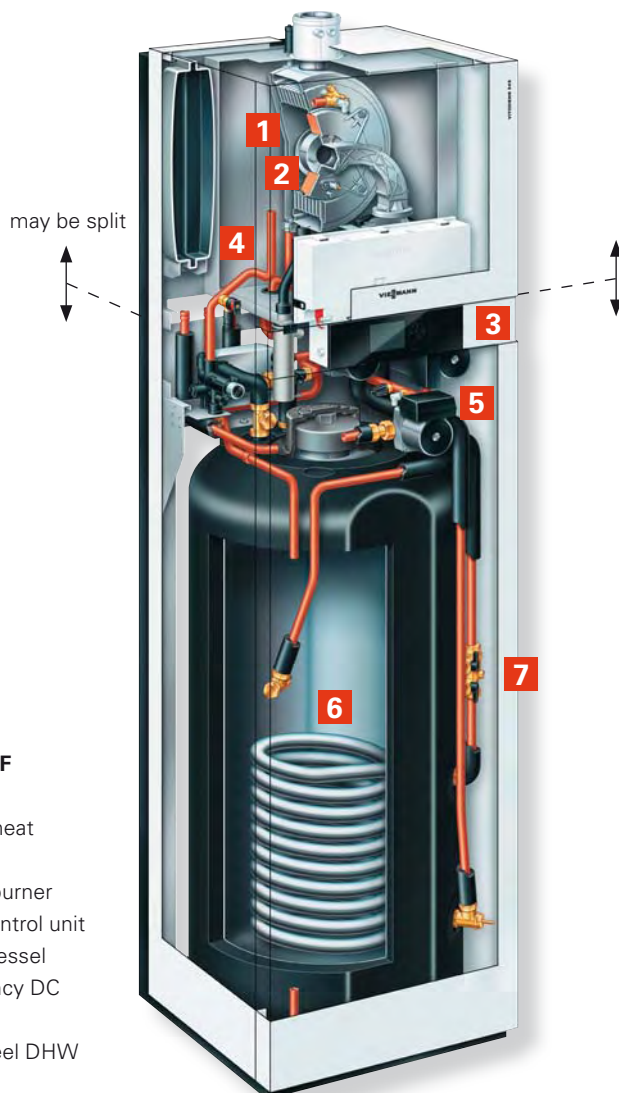
#### Intelligent combustion control

All Vitodens 343-F models are now equipped with the automatic Lambda Pro Control combustion controller. Levels of efficiency remain high even if the gas composition fluctuates. It is also no longer necessary to change the nozzle if the gas type is changed, e.g. through admixing biogas. The Lambda Pro Control combustion controller automatically adjusts the boiler to suit the new conditions.

Thanks to the Lambda Pro Control combustion controller, the intervals required for a flue gas inspection have now been extended to up to five years [in Germany]. That saves on fees. The extension of the inspection intervals were enabled by the new Sweeping and Inspection Ordinance and the 1st Federal Immissions Order [both Germany].

#### Pumps with up to 70 percent lower power consumption

The high efficiency DC pumps for the heating and solar circuits are also new. These variable speed DC pumps consume up to 70 percent less power than conventional pumps. The heating circuit and solar circuit pump of the Vitodens 343-F thereby comply with the requirements of Energy Label A. This is why subsidies are available in Germany for gas condensing storage combi boilers when modernising in conjunction with a solar thermal system.



#### Vitodens 343-F

- 1 Inox-Radial heat exchanger
- 2 MatriX gas burner
- 3 Vitotronic control unit
- 4 Expansion vessel
- 5 High efficiency DC pumps
- 6 Stainless steel DHW cylinder
- 7 Solar circuit fill valve



For modern heating with condensing and solar technology in detached houses, the Vitodens 343-F is an extremely energy-efficient, environmentally responsible and advanced heating system.



New Vitotronic control unit – easy operation thanks to simple navigation and graphic display, for example for indicating the solar yield

#### Take advantage of these benefits

- Gas condensing storage combi boiler with integral solar DHW heating, 3.8 to 19 kW
- Standard seasonal efficiency [to DIN]: 98 % ( $H_g$ ) / 109 % ( $H_i$ )
- Durable and efficient through the Inox-Radial heat exchanger
- MatriX gas burner with a long service life through stainless steel MatriX mesh – resistant to high temperature loads
- High DHW convenience through stainless steel DHW cylinder with 220 litre capacity and solar indirect coil
- Eligible for subsidies [in Germany] through HE DC pumps for heating and solar circuit (compliant with Energy Label A) in conjunction with a solar thermal system
- New control unit that is easy to operate with plain text and graphic display
- The programming unit part of the control unit can also be fitted on a wall mounting base
- Lambda Pro Control combustion controller for all gas types – saving fees by extending the inspection intervals to up to five years [in Germany]
- Universal connection sets for individual installation flush with the wall
- Splits for easier handling
- Solar coverage in excess of 60 %

For the specification, see pages 40/41.



Gas condensing  
technology

Vitodens 333-F



## VITODENS 333-F

Combine these benefits of the Vitodens 300-W with the high level of DHW convenience afforded by a separate DHW cylinder in one compact floorstanding appliance.

With the Vitodens 333-F, you're doing everything right. It is suitable for both modernisation projects and new build. This floorstanding gas condensing boiler will win you over with its reliable operation and integral, internally heated 130 litre DHW cylinder or 100 litre primary store.

### **DHW convenience included**

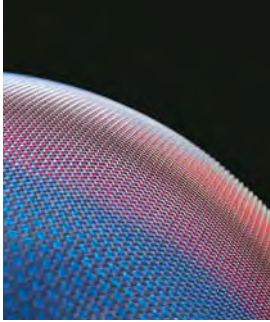
The Vitodens 333-F is an ideal combination of efficient gas condensing technology and reliable DHW provision. Exceptional operational reliability and a long service life make this compact boiler stand out from the crowd. Alongside its economical consumption of natural gas, maintenance costs are also kept to a minimum.

In the output range up to 26 kW, the Vitodens 333-F covers a broad spectrum of application options – from apartments to detached and two-family houses.

### **Compact design; fully fitted**

The footprint of the Vitodens 333-F is no larger than that of a domestic fridge-freezer. This condensing boiler is fully fitted at the factory, which significantly reduces the installation time. You'll particularly appreciate this when you see that the loss of heating and DHW provision during a modernisation project can be reduced to a minimum.





MatriX gas burner

#### Compact and efficient

The Vitodens 333-F is a powerful gas condensing storage combi boiler. The stainless steel primary store with its 100 litre capacity safeguards a high level of DHW convenience. For hard water areas, a version using an enamelled DHW cylinder with 130 litre capacity with an indirect internal coil is available as an alternative. The stainless steel version meets the highest hygiene demands. This is because the homogenous surface of stainless steel remains hygienically perfect and acid-resistant, even after many years in use.

The proven MatriX gas burner with Lambda Pro Control combustion controller automatically adjusts itself to varying gas qualities and ensures a constantly high standard seasonal efficiency [to DIN] of 98 percent.

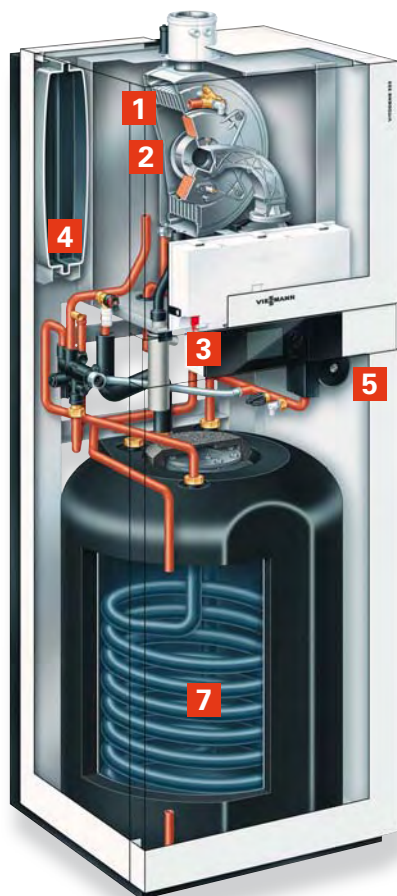
Thanks to the Lambda Pro Control combustion controller, the intervals required for a flue gas inspection have now been extended to up to five years [in Germany]. That saves on fees. The extension of the inspection intervals were enabled by the new Sweeping and Inspection Ordinance and the 1st Federal Immissions Order [both Germany].

#### New control unit

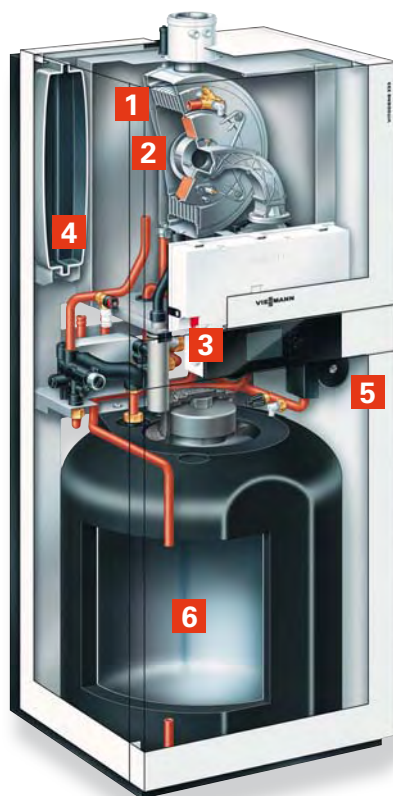
The new Vitotronic control unit offers an intuitive operation. The easily legible backlit monochrome display is 70 percent larger than that on comparable devices. In addition, it can display graphics enabling it to show heating curves as well. If in doubt, help with the next steps is available at the push of a button.

#### Power-saving high efficiency DC pump

Compared to conventional pumps, the new variable speed HE DC pump consumes up to 70 percent less power and consequently meet the requirements for Energy Label A.



Vitodens 333-F with enamelled DHW cylinder  
with indirect coil for hard water areas



Vitodens 333-F with stainless steel primary  
store

#### Vitodens 333-F

- 1 Inox-Radial heat exchanger
- 2 MatriX gas burner
- 3 Vitotronic control unit
- 4 Expansion vessel
- 5 High efficiency DC pump
- 6 Stainless steel primary store
- 7 DHW cylinder with internal indirect coils



DHW included – the Vitodens 333-F



New Vitotronic control unit –  
clear indication of switching times

#### Take advantage of these benefits

- Gas condensing storage combi boiler with integral stainless steel primary store or enamelled DHW cylinder with indirect coil, 3.8 to 26 kW
- Standard seasonal efficiency [to DIN]: 98 % (H<sub>g</sub>) / 109 % (H<sub>i</sub>)
- Durable and efficient through the Inox-Radial heat exchanger
- MatriX gas burner with a long service life through stainless steel MatriX mesh – resistant to high temperature loads
- Stainless steel primary store with 100 litre capacity (enamelled DHW cylinder with indirect coil with 130 litre capacity)
- Energy saving high efficiency DC pump (in accordance with Energy Label A)
- New Vitotronic control unit that is easy to operate with plain text and graphic display
- The programming unit part of the control unit can also be fitted on a wall mounting base
- Lambda Pro Control combustion controller for all gas types – saving fees by extending the inspection intervals to up to five years [in Germany]
- Universal connection sets for individual installation flush with the wall
- DHW expansion vessel and DHW circulation pump can be integrated inside the appliance
- Top set with dimensions and design to match those of the appliance enables the control of mixed heating circuits

For the specification, see pages 40/41.



Gas condensing  
technology

Vitodens 300-W





## VITODENS 300-W

The top model amongst the Viessmann range of wall mounted gas condensing boilers. You'll love its efficient operation and compact dimensions!

Your investment in the Vitodens 300-W will only take a few years to pay for itself – simply through the annual savings you'll make on natural gas. Our boiler consumes less because of its high efficiency compared to an older type of boiler. The Vitodens 300-W incorporates the most up-to-date technology. Thanks to space-saving assemblies, this gas condensing boiler is extremely compact and can be installed even in small recesses. Side clearances for maintenance are not required, since all connections are easily accessible from the front. This makes it ideally suited to modernisation projects. In new build, the space it would have taken up can be used for other purposes.

### **The futureproof condensing boiler**

The Vitodens 300-W can be installed almost anywhere. It operates particularly quietly, making it suitable for use in the hallway or kitchen.

Highly efficient condensing technology is designed for use with all types of natural gas. The Vitodens 300-W is futureproof: its intelligent Lambda Pro Control combustion controller automatically adapts the combustion to changing gas qualities and operating conditions.

An advanced heating system should include innovative solar technology to utilise the free energy from the sun. At Viessmann, we offer you a system for this which is optimally matched to the Vitodens 300-W.

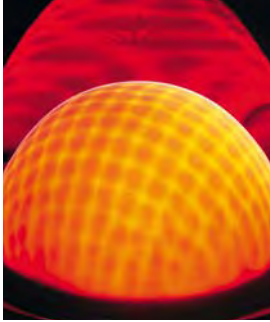
### **Powerful and efficient**

With three output stages from 3.8 to 35 kW, simply select the most suitable gas condensing boiler for your living space in a detached or two-family house. The modulating MatriX gas burner ensures high operational reliability and low emissions.

### **Economical power consumption**

Alongside its extremely low gas consumption, the Vitodens 300-W wall mounted gas condensing boiler also consumes only a modest amount of power: Its variable speed high efficiency DC pump reduces power consumption by 70 percent compared to conventional pumps.



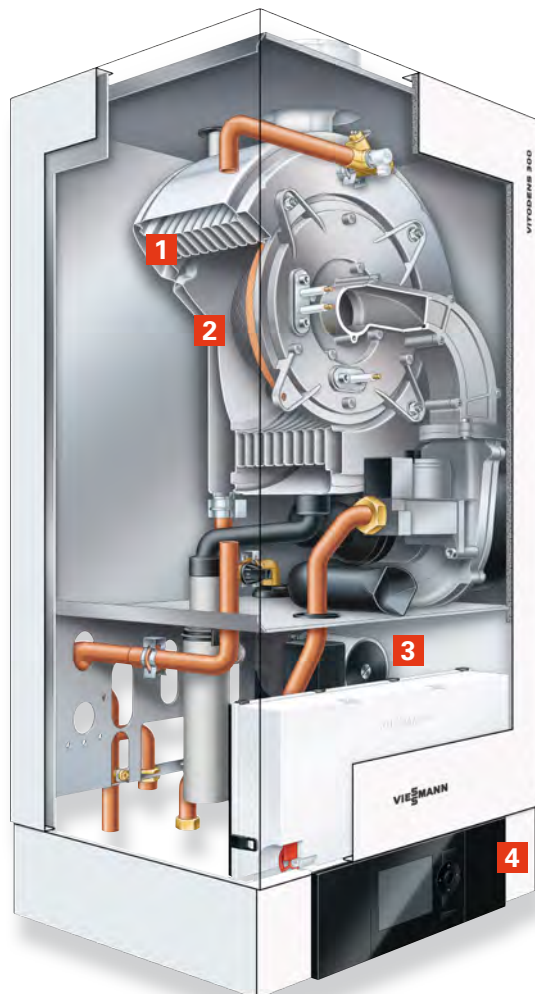


MatriX gas burner for particularly  
clean combustion

#### Highly efficient heat exchanger

The corrosion-resistant stainless steel Inox-Radial heat exchanger is the core of the Vitodens 300-W gas condensing boiler. It converts the energy used into heat efficiently and with almost no loss. The efficiency is a practically unbeatable 98 percent. This extremely economical usage of valuable natural gas also causes fewer CO<sub>2</sub> emissions. This means that with the Vitodens 300-W, you can make your personal contribution towards actively protecting the climate.

The structure of the heating surfaces together with the condensation have a self-cleaning effect which prevents deposits caused by operation and contributes to the boiler's long service life. Longer maintenance intervals and therefore lower service costs protect your wallet.



#### Large water capacity

The Vitodens 300-W holds a large amount of water and is therefore well suited to the most varied heating systems. Major demand fluctuations cause it no difficulties at all.

#### Intelligent combustion control

All Vitodens 300-W models are now equipped with the automatic Lambda Pro Control combustion controller. Levels of efficiency remain high even if the gas composition fluctuates. It is also no longer necessary to change the nozzle if the gas type is changed, e.g. through admixing biogas. The Lambda Pro Control combustion controller automatically adjusts the boiler to suit the new conditions.

Thanks to the Lambda Pro Control combustion controller, the intervals required for a flue gas inspection have now been extended to up to five years [in Germany]. That saves on fees. The extension of the inspection intervals were enabled by the new Sweeping and Inspection Ordinance and the 1st Federal Immissions Order [both Germany].

#### Economical, quiet and with low emissions

The variable speed high efficiency DC pump in the Vitodens 300-W reduces the power consumption by more than 70 percent compared to conventional pumps. The low fan speed ensures a low noise level during combustion, and constantly low emissions make an active contribution towards sustained protection of the environment.

#### Integral diagnostic system

The Vitodens 300-W is equipped with the SMART (Self Monitoring And Reporting Technology) diagnostic system that reports deviations from the permissible operating conditions and issues plain text messages in plenty of time. This enables easy maintenance and service scheduling, prevents failures and reduces unnecessary repair costs.

#### Vitodens 300-W

- 1 Inox-Radial heat exchanger made from stainless steel
- 2 MatriX gas burner
- 3 High efficiency DC pump
- 4 Vitotronic control unit



The compact Vitodens 300-W gas condensing boiler doesn't need to hide away, as it looks good in any surroundings.



Inox-Radial heat exchanger made from stainless steel

#### Take advantage of these benefits

- Wall mounted gas condensing boiler (system boiler), 3.8 to 35 kW
- Wide modulation range
- Large water capacity, low cycle frequency, even when little heat is drawn off
- Durable and efficient through the Inox-Radial heat exchanger
- MatriX gas burner with a long service life through stainless steel MatriX mesh – resistant to high temperature loads
- New Vitotronic control unit that is easy to operate with plain text and graphic display
- The programming unit part of the control unit can also be fitted on a wall mounting base
- Lambda Pro Control combustion controller for all gas types – saving fees by extending the inspection intervals to up to five years [in Germany]
- Energy saving high efficiency DC pump (compliant with Energy Label A)
- SMART: preventative maintenance message – high appliance availability, services can be scheduled
- Quiet operation through low fan speed

For the specification, see pages 40/41.



Gas condensing  
technology

Vitodens 222-F



## VITODENS 222-F

This floorstanding condensing storage combi boiler with enamelled primary store boasts a high level of DHW output and the comfort of intuitive equipment settings.

Who says that you can't put your new heating centre in the kitchen? With the new Vitodens 222-F floorstanding gas condensing storage combi boiler, it's not a problem. It fits perfectly in amongst your kitchen furniture, where it neatly blends in and works extremely economically in versions with a variable speed HE DC pump.

We produce the MatriX cylinder burner and stainless steel Inox Radial heat exchanger ourselves.

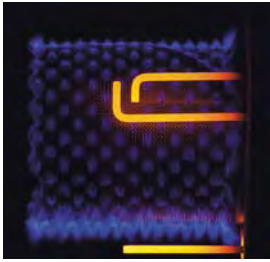
### Low gas consumption

The Vitodens 222-F offers permanently low gas consumption and, with the Lambda Pro Control combustion controller, it ensures high operational reliability.

### Easy installation

With its connection sets and wall standing design, this compact boiler offers a particularly wide range of applications. It is largely pre-assembled and can be quickly installed. And thanks to the large number of standard components to be found in other condensing storage combi boilers from Viessmann, your heating contractor can carry out all necessary maintenance and service work quickly and inexpensively.



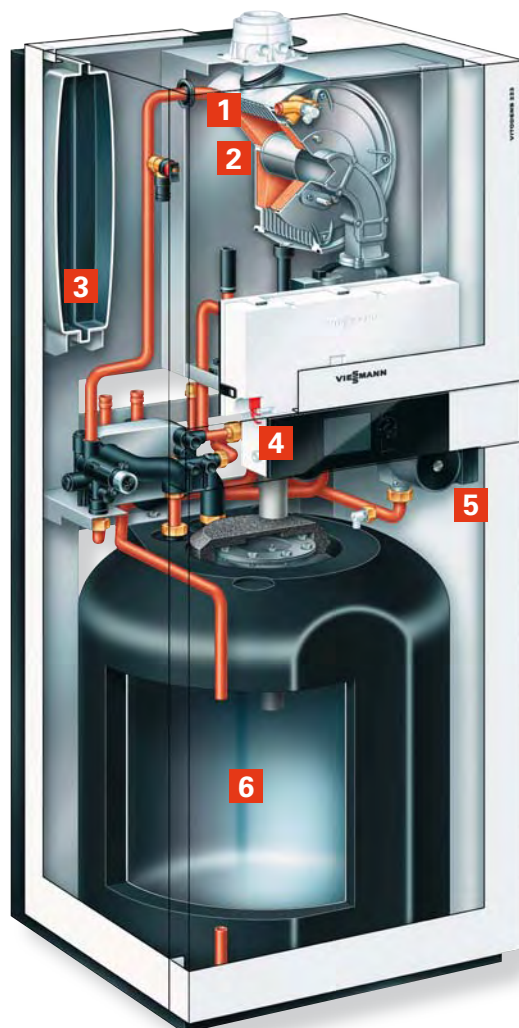


MatriX cylinder burner

#### Affordable and space-efficient

The new gas condensing storage combi boiler Vitodens 222-F is designed specifically for modernising heating systems and as a replacement for older gas boilers with cylinder below. With output ranging up to 35 kW, this heating centre is designed for high DHW convenience.

As with all new compact appliances, the gas condensing storage combi boiler Vitodens 222-F requires very little space: its width and depth correspond to standard kitchen unit dimensions. The proven MatriX cylinder burner with Lambda Pro Control combustion controller automatically adjusts itself to varying gas qualities and ensures a constantly high standard seasonal efficiency [to DIN] of 98 percent.



#### Intelligent combustion control

All Vitodens 222-F models are now equipped with the automatic Lambda Pro Control combustion controller. Levels of efficiency remain high even if the gas composition fluctuates. It is also no longer necessary to change the nozzle if the gas type is changed, e.g. through admixing biogas. The Lambda Pro Control combustion controller automatically adjusts the boiler to suit the new conditions.

Thanks to the Lambda Pro Control combustion controller, the intervals required for a flue gas inspection have now been extended to up to five years [in Germany]. That saves on fees. The extension of the inspection intervals were enabled by the new Sweeping and Inspection Ordinance and the 1st Federal Immissions Order [both Germany].

#### Convenient Vitotronic control unit

Contractor and user benefit equally from the easy to use Vitotronic control unit. The structure of the control menu is logical and easy to understand; the unit is backlit, rich in contrast and easy to read. If in doubt, a help function informs users of the next steps to perform.

The user interface with graphic capability is also designed to display heating curves. If required, the programming unit can be installed anywhere on a wall mounted base up to the five metres (cable length) away from the heating centre.

#### Vitodens 222-F

- 1 Inox-Radial heat exchanger
- 2 MatriX cylinder burner
- 3 Expansion vessel
- 4 Vitotronic control unit
- 5 High efficiency DC pump
- 6 Enamelled primary store



New Vitotronic control unit – easy operation thanks to user prompts and graphic display, such as of the heating curves

#### Take advantage of these benefits

- Gas condensing storage combi boiler with integral enamelled primary store, 4.8 to 35 kW
- Standard seasonal efficiency [to DIN]: 98 % ( $H_g$ ) / 109 % ( $H_i$ )
- Enamelled primary store with 100 litre capacity (35 kW: 130 litres)
- Durable and efficient through the Inox-Radial heat exchanger
- Modulating MatriX cylinder burner with a long service life through stainless steel MatriX mesh – resistant to high temperature loads
- New Vitotronic control unit that is easy to operate with plain text and graphic display
- The programming unit part of the control unit can also be fitted on a wall mounting base
- Optionally with power-saving high efficiency DC pump (compliant with Energy Label A)
- Lambda Pro Control combustion controller for all gas types – saving fees by extending the inspection intervals to up to five years [in Germany]
- Universal connection sets for individual installation flush with the wall
- No lateral service clearance required
- DHW expansion vessel and DHW circulation pump can be integrated inside the appliance

For the specification, see pages 40/41.



Gas condensing  
technology

Vitodens 222-W  
Vitodens 200-W





## VITODENS 222-W

## VITODENS 200-W

The Vitodens 222-W and 200-W gas condensing boilers are effective and affordable solutions for small and large heat demands.

### **Vitodens 222-W:**

#### **Compact and convenient**

The Vitodens 222-W gas condensing boiler is ideally suited to apartments and detached houses. It can be easily wall mounted in a recess in the bathroom or in the utility room. It can even fit above the worktop, washing machine or drier.

The level of DHW convenience provided by the Vitodens 222-W is particularly impressive. This gas condensing boiler has an integral stainless steel primary store with 46 litre capacity. Whilst hot water is being drawn, this volume is comparable to a separate 150 litre DHW cylinder.

#### **Vitodens 200-W: Continuous efficiency**

Stainless steel is the only choice of material where economy and a long service life are required. For this reason, the Vitodens 200-W is equipped with a stainless steel Inox-Radial heat exchanger which offers the required reliability and ensures permanently high condensing efficiency.

#### **Available as a central heating or combi boiler**

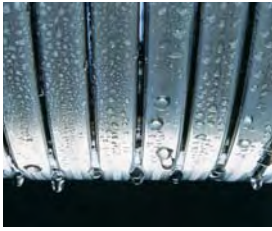
The Vitodens 200-W wall mounted gas condensing boiler is optionally available as a system boiler with separate DHW provision, or as a combi boiler with an output of up to 35 kW and an integral instantaneous water heater. This ensures central and DHW heating are available in the smallest space.

#### **Extremely easy to service**

Even in terms of maintenance and service, you'll save plenty of time with these two gas condensing boilers. All components are accessible from the front, making a side clearance for servicing unnecessary.

Last, but not least, all system components, such as the primary store, heating water expansion vessel, pumps and safety valves are fully fitted at the factory.





Inox-Radial heat exchanger

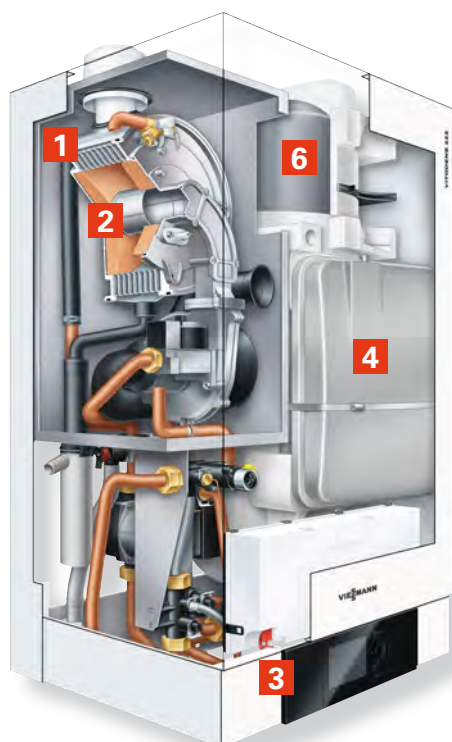
#### **Vitodens 222-W:**

##### **Condensing storage combi boiler with integral stainless steel primary store**

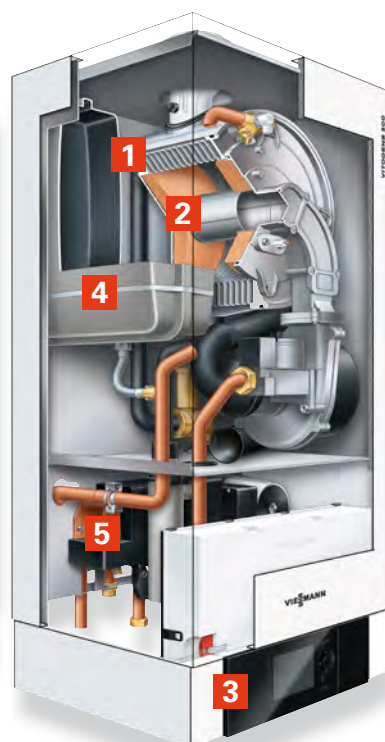
With the Vitodens 222-W, Viessmann offers a particularly space-saving, wall mounted, gas condensing storage combi boiler for high DHW demand. The heat cell comprises the proven stainless steel Inox-Radial heat exchanger, the modulating MatriX cylinder burner and the automatic Lambda Pro Control combustion controller. It is particularly recommended for installation in new build, and will easily fit in, even where space is tight.

#### **How the primary store works**

In comparison to a conventional DHW cylinder, a primary store works with significantly less water content to provide the same volume of hot water. The water heated to the required temperature in the heat exchanger (instantaneous water heater) continually charges the primary store and is, therefore, immediately available for further drawing. Temperature sensors ensure that the preset temperature is reached and maintained.



**Vitodens 222-W**



**Vitodens 200-W**

Where necessary, the MatriX cylinder burner in the Vitodens 222-W starts automatically and ensures the required water temperature is reached. This principle particularly brings to bear when filling a bathtub or having a long shower.

#### **Vitodens 200-W:**

##### **Efficient and attractive – with a price to match**

With the Vitodens 200-W, Viessmann offers a wall mounted gas condensing boiler with an exemplary price/performance ratio, excellent heating and DHW convenience, compact dimensions and a timeless, elegant design.

#### **Up to 98 percent efficiency**

The Vitodens 200-W wall mounted gas condensing boiler consumes less energy because it also utilises the heat in the flue gases. The result is an efficiency of up to 98 percent. It's clear that this will reduce your heating costs and be good for the environment.

#### **Robust burner with a long service life**

The MatriX cylinder burner, developed and manufactured in-house, is characterised by a long service life thanks to its stainless steel MatriX mesh. The integral Lambda Pro Control automatically adapts the combustion to changing gas types. This ensures consistently high energy efficiency and offers security for the future in liberalised gas markets and where admixtures of biogas will be used.

Thanks to the Lambda Pro Control combustion controller, the intervals required for a flue gas inspection have now been extended to up to five years [in Germany]. That saves on fees. The extension of the inspection intervals were enabled by the new Sweeping and Inspection Ordinance and the 1st Federal Immissions Order [both Germany].

- 1** Stainless steel Inox-Radial heat exchanger
- 2** MatriX cylinder burner
- 3** Vitotronic control unit
- 4** Expansion vessel
- 5** Stainless steel plate heat exchanger (combi boiler)
- 6** Stainless steel primary store



The Vitodens 200-W is compact and can even be installed in recesses. Clearance to side walls is not necessary, as all components are accessible from the front.

#### Take advantage of these benefits

- Standard seasonal efficiency [to DIN] up to 98 % (H<sub>s</sub>) / 109 % (H<sub>i</sub>)
- Durable and efficient through the Inox-Radial heat exchanger
- Modulating MatriX cylinder burner with a long service life through stainless steel MatriX mesh – resistant to high temperature loads
- New Vitotronic control unit that is easy to operate with plain text and graphic display
- The programming unit that is part of the control unit can also be fitted on a wall mounting base
- Optionally with power-saving high efficiency DC pump (compliant with Energy Label A)
- Lambda Pro Control combustion controller for all gas types – saving fees by extending the inspection intervals to up to five years [in Germany]
- Quiet operation through low fan speed

#### The added bonus of the Vitodens 222-W

- Particularly space-efficient gas condensing storage combi boiler with integral stainless steel primary store
- High level of DHW convenience with immediate availability
- High continuous output of hot water through cylinder heating
- All system components, such as the primary store, expansion vessel (on the heating water side), pumps and safety fittings/valves are already fitted as standard

#### The added bonus of the Vitodens 200-W

- Exemplary price/performance ratio
- Compact dimensions, only 450 mm wide (4.8 to 35 kW)
- Available either as a combi or system boiler

#### The added bonus of the combi boiler

- High level of DHW convenience through standby function

#### The added bonus of the system boiler

- Affordable and compact solution for a high heat demand (up to 105 kW)
- Option of cascade circuit with up to four boilers with an output from 45 kW to 420 kW

For the specification, see pages 40/41.





Vitocrossal 300 gas condensing boiler\*

Page 16

<b>Rated output (50/30 °C)</b>	kW	9-27	12-35	16-49	22-66
<b>Rated output (80/60 °C)</b>	kW	8-24	11-32	15-44	20-60
<b>Dimensions</b> (overall)					
Length	mm	836	836	992	992
Width	mm	660	660	660	660
Height	mm	1484	1484	1484	1484
<b>Weight</b>	kg	122	125	155	160
<b>Boiler water content</b>	litres	51	49	86	82

\* available up to 142 kW; specification at [www.viessmann.de](http://www.viessmann.de)



Vitodens 343-F gas condensing storage combi boiler

Page 20

<b>Rated output (50/30 °C)</b>	kW	3.8-13	3.8-19
<b>Rated output (80/60 °C)</b>	kW	3.5-11.8* <sup>1</sup>	3.5-17.2
<b>Dimensions</b> (overall)			
Length	mm	595	595
Width	mm	600	600
Height	mm	2075* <sup>2</sup>	2075* <sup>2</sup>
<b>Weight</b>	kg	162* <sup>2</sup>	162* <sup>2</sup>
<b>Heat exchanger capacity</b>	litres	3.8	3.8
<b>Stainless steel primary store with solar indirect coil</b>	litres	220	220

\*<sup>1</sup> 16 kW for DHW heating

\*<sup>2</sup> Vitodens 343-F can be split



Vitodens 333-F gas condensing storage combi boiler

Page 24

Type			FS3B	FS3B	FS3B	FR3B	FR3B
<b>Rated output (50/30 °C)</b>	kW		3.8-13	3.8-19	5.2-26	3.8-19	5.2-26
<b>Rated output (80/60 °C)</b>	kW		3.5-11.8*	3.5-17.2	4.7-23.7	3.5-17.2	4.7-23.7
<b>Dimensions</b> (overall)	Length	mm	595	595	595	595	595
	Width	mm	600	600	600	600	600
	Height	mm	1425	1425	1425	1625	1625
<b>Weight</b>	kg		110	110	113	142	145
<b>Heat exchanger capacity</b>	litres		3.8	3.8	5.0	3.8	5.0
<b>Stainless steel primary store</b>	litres		100	100	100	–	–
<b>DHW cylinder with internal indirect coils</b>	litres		–	–	–	130	130

\* 16 kW for DHW heating



Vitodens 300-W wall mounted gas condensing boiler

Page 28

Rated output (50/30 °C)		kW	3.8-13	3.8-19	5.2-26	7.0-35
Rated output (80/60 °C)		kW	3.5-11.8*	3.5-17.2	4.7-23.7	6.4-32
Dimensions (overall)	Length	mm	360	360	380	380
	Width	mm	450	450	480	480
	Height	mm	850	850	850	850
Weight		kg	50	50	48	50
Heat exchanger capacity		litres	3.8	3.8	5.0	5.6

\* 16 kW for DHW heating



## Vitodens 222-F gas condensing storage combi boiler

### Page 32

<b>Rated output (50/30 °C)</b>		kW	4.8-19	6.5-26	8.8-35
<b>Rated output (80/60 °C)</b>		kW	4.3-17.2	5.9-23.7* <sup>1</sup>	8-31.7* <sup>2</sup>
<b>Dimensions</b> (overall)	Length	mm	595	595	595
	Width	mm	600	600	600
	Height	mm	1425	1425	1625
<b>Weight</b>		kg	129	132	141
<b>Heat exchanger capacity</b>		litres	1.8	2.4	2.8
<b>DHW primary store</b>		litres	100	100	130

\*<sup>1</sup> 29.3 kW for DHW heating

\*<sup>2</sup> 35 kW for DHW heating



## Vitodens 222-W wall mounted gas condensing boiler

### Page 36

<b>Rated output (50/30 °C)</b>		kW	4.8-19	6.5-26	8.8-35
<b>Rated output (80/60 °C)</b>		kW	4.3-17.2	5.9-23.7* <sup>1</sup>	8-31.7* <sup>2</sup>
<b>Dimensions</b> (overall)	Length	mm	480	480	480
	Width	mm	600	600	600
	Height	mm	900	900	900
<b>Weight</b>		kg	60	63	67
<b>Heat exchanger capacity</b>		litres	1.8	2.4	2.8
<b>DHW primary store</b>		litres	46	46	46

\*<sup>1</sup> 29.3 kW for DHW heating

\*<sup>2</sup> 35 kW for DHW heating



## Vitodens 200-W wall mounted gas condensing boiler

### Page 36

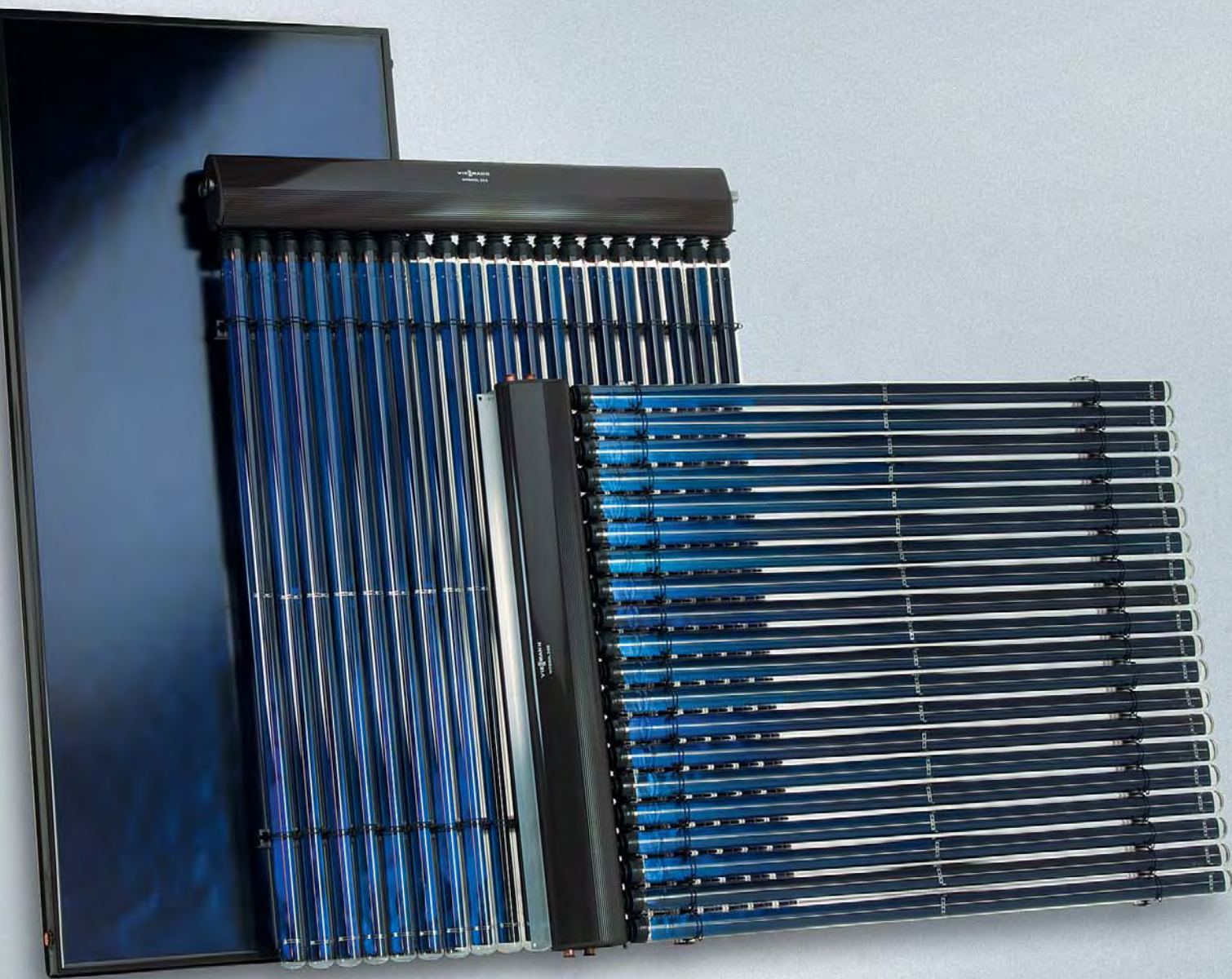
Type		Gas combi boiler			
<b>Rated output (50/30 °C)</b>		kW	6.5-26	8.8-35	
<b>Rated output (80/60 °C)</b>		kW	5.9-23.7* <sup>1</sup>	8-31.7* <sup>2</sup>	
<b>Dimensions</b> (overall)	Length	mm	360	360	
	Width	mm	450	450	
	Height	mm	850	850	
<b>Weight</b>		kg	46	48	
<b>Heat exchanger capacity</b>		litres	2.4	2.8	

\*<sup>1</sup> 29.3 kW for DHW heating

\*<sup>2</sup> 35 kW for DHW heating

Type		Gas boiler							
<b>Rated output (50/30 °C)</b>		kW	4.8-19	6.5-26	8.8-35	17-45	17-60	30-80	30-105
<b>Rated output (80/60 °C)</b>		kW	4.3-17.2	5.9-23.7	8-31.7	15.4-40.7	15.4-54.4	27-72.6	27-95.6
<b>Dimensions</b> (overall)									
Length	mm	360	360	360	380	380	530	530	
Width	mm	450	450	450	480	480	480	480	
Height	mm	850	850	850	850	850	850	850	
<b>Weight</b>		kg	43	43	47	65	65	83	83
<b>Heat exchanger capacity</b>		litres	1.8	2.4	2.8	7.0	7.0	12.8	12.8



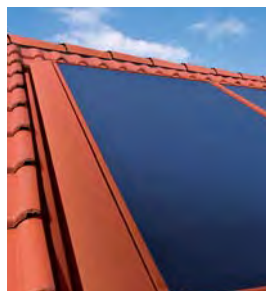


## A perfect match: System technology

The convenient controls and perfectly matching Viessmann system technology offer you maximum reliability, flexibility and efficiency.

"The whole is more than the sum of its parts." In accordance with this philosophy, Viessmann does not simply supply individual heating equipment components that correspond to the high Viessmann standards for quality, reliability and effectiveness. Rather, all products are part of a matching total concept, where all components complement one another. Only the perfect interaction of system-integral components draws out the maximum potential of our innovative leading technology.

Viessmann system technology incorporates everything that marks out a heating system as reliable and economical. For example, the Vitotronic control unit with wireless remote control, the powerful Vitocell DHW cylinder for the most convenient supply of DHW, right through to high-quality solar thermal systems for cost-effective central heating backup.



### Solar thermal and photovoltaic collectors

Free solar energy: Find out more about our solar thermal systems for DHW heating, central heating backup and power generation.

**Page 44**



### DHW

DHW convenience for every demand: With the Vitocell range of cylinders from Viessmann, you have an enormous choice and maximum scope when designing your heating system.

**Page 48**



### Control unit

Clear, convenient, intelligent: The Vitotronic offers you the perfect functions for fast and precise control of your heating system.

**Page 50**



### Data communication

Do you know about Vitocom? It's the ideal solution for monitoring a heating system, and exchanging data easily and conveniently from a different location.

**Page 52**





Tube collectors can be installed anywhere.

## Solar thermal – free solar energy

Extend your new gas boiler with the right solar technology.  
Then you'll save twice as much precious heating energy.

A new heating system and a solar thermal system simply go hand in hand. There are good reasons for this. In the summer, almost the entire energy demand for DHW heating can be covered by solar collectors. In spring and autumn, this system can also back up your central heating system. This means in a new house, you can save up to 35 percent of the total heating energy.

Calculated over the year, 60 percent of energy can be saved on DHW heating alone. This is because solar energy is free, and even daylight is converted into heat by the collector when the sun is not shining directly onto the roof.

### **The principle is quite simple**

Capture solar rays and then utilise them efficiently – it sounds more difficult than it is. Of course, a great deal of innovative technology and experience are required. Solar thermal systems "harvest" solar energy in the flat-plate or tube collectors. In these, a heat transfer medium is heated by the insolation and routed into a DHW cylinder. There, the heat is transferred via an indirect coil to the domestic hot water to be heated, or to the heating circuit. Thereafter, the cooled liquid is returned to the collector, and the cycle begins again. If there is insufficient insolation, e.g. in winter, the boiler provides reheating.

The Vitosol range offers solar collectors for every aspiration and every budget. Installation on the roof or wall opens up a variety of design options.

### Flat-plate and tube collectors

The Vitosol 200-F flat-plate collector excels because of its high quality, lasting operational reliability and high efficiency. With its extremely translucent anti-reflex glass and highly selectively coated copper absorber, the high performance Vitosol 300-F flat-plate collector utilises the intensive solar radiation particularly efficiently.

The Vitosol 200-T vacuum tube collector is characterised by its particularly effective thermal insulation and high efficiency resulting from its Sol-titanium coating. It can be installed anywhere.

The Vitosol 300-T meets the highest demands. This top quality, high-performance collector is designed around the heat pipe principle.

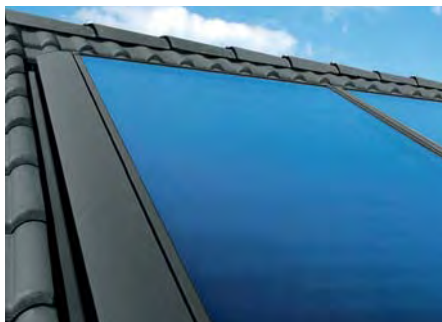
### Generate your own power with Vitovolt

The Vitovolt 200 and Vitovolt 100 photovoltaic modules generate electrical energy right in the solar cell, which is fed straight into the public grid via an inverter.

### Take advantage of public subsidies

Your Viessmann heating contractor is well-informed about current subsidy programmes and will give you the most important contact details to obtain information and application forms.

Or simply take a look on the internet:  
[www.viessmann.de/foerderprogramme](http://www.viessmann.de/foerderprogramme).



The Vitosol 200-F flat-plate collector features frost-proof and hail-proof safety glass, and corrosion-proof components made of steel and aluminium. The frames are available on request in any RAL colour.



The Vitosol 300-T and Vitosol 200-T vacuum tube collectors characterised by their superior reliability and their long service life.



Vitovolt photovoltaic modules from Viessmann also provide a high yield of power generation in partially shaded areas.



Outstanding quality you can rely on.  
More information at: [www.test.de](http://www.test.de).





- 1 Vitovolt photovoltaic modules
- 2 Vitosol solar collectors
- 3 DC enable point
- 4 Inverter
- 5 Electricity meters for consumption and feed-in

- 6 Main fuse
- 7 Public grid
- 8 Condensing heating system with multi-mode combi cylinder for DHW heating and central heating backup
- 9 Solar-Divicon pump station

## DHW heating and central heating backup with solar energy

Solar thermal systems are ideally suited for DHW heating and central heating backup. Thanks to freely available solar energy, your investment will pay for itself within a few years through high savings on fossil fuel.

Generally speaking, you have the choice of using solar energy to heat DHW or to provide central heating backup as well. The savings on oil or gas are considerable, as you will be able to reduce your energy consumption, required to heat DHW for the daily demand, by 60 percent. If you combine the heating of DHW and heating water, your annual savings will be around 35 percent of the total energy required.

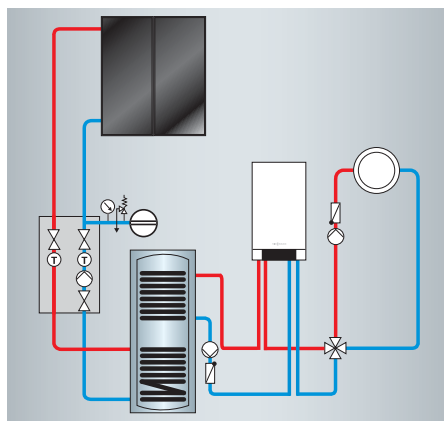
### Solar thermal system with dual mode DHW cylinder

The dual mode DHW cylinder is key to this type of system. When there is sufficient insolation, the heat transfer medium in the solar thermal system heats up the water in the DHW cylinder via the lower indirect coil.

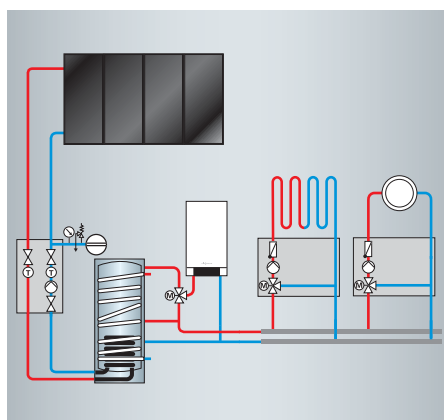
When the temperature drops through water being drawn off, such as for a bath or shower, the boiler will start if required to provide additional heating via the second circuit.

### Solar thermal system for DHW heating and central heating backup

The heat transfer medium heated up in the solar collectors can be used for back-up heating of the heating water, as well as for DHW heating. For this, the heating circuit, via a heat exchanger, uses the water in the solar cylinder that is continuously heated by the solar collectors. The control unit checks whether the required room temperature can be achieved. If the temperature is below the set value, the boiler will also start.



Solar DHW heating



Solar DHW heating and central heating backup

With Viessmann, the complete heating and solar technology comes from a single source. All components are perfectly matched.





The Vitocell range from Viessmann offers the right DHW cylinder for every demand, ideally matched to the respective gas boiler or solar thermal system.

## DHW convenience for every demand

With the Vitocell DHW cylinders, we offer you the convenient solution to supplying your household with hot water – the perfect extension to your new gas boiler.

The demand for hot water is completely different in every household. One factor is the number of residents and another is their bathing and showering habits. For example, several people in one household frequently go to work and school at the same time, so lots of hot water needs to be continuously available for the shower in a short space of time.

Those who prefer a bath will also want to have enough hot water to fill the tub. Finally, the DHW cylinder should also provide

sufficient water if, in an apartment block for example, hot water is drawn from more than one outlet at the same time.

The Vitocell DHW cylinders fulfil these requirements in every respect and can also meet every aspiration where equipment levels are concerned. In all instances, the installation of a solar thermal system is recommended to save energy and heat the water without cost.

### The right DHW cylinder for every demand

In the Vitocell cylinder range, you'll find exactly the right DHW cylinder for your requirements. Subject to water demand and installation options, select a floorstanding DHW cylinder, or a cylinder for installation adjacent to or below the boiler.

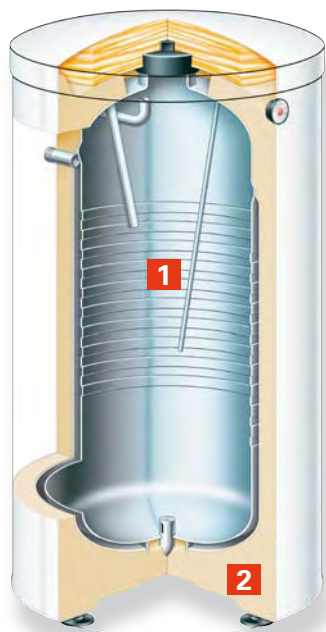
### Hygienic DHW provision

The quality of the inner surface of the DHW cylinder is crucial to providing DHW hygienically. For this reason, Viessmann relies on two high quality materials: Ceraprotect enamel coating for safe, lasting protection against corrosion for the Vitocell 100 range, and stainless steel for the Vitocell 300 range for the highest of hygiene standards.

The indirect coils inside Vitocell DHW cylinders reach right down to the cylinder floor. This enables them to heat the entire water content and make particularly economical use of the full cylinder capacity.

### Vitocell 300 made of stainless steel

Vitocell 300 DHW cylinders made from corrosion-resistant stainless steel meet some of the most stringent hygiene standards. Stainless steel is used for good reason in kitchens, laboratories, hospitals and the food processing industry – because it offers excellent hygiene properties. Its homogeneous surface retains its characteristics even after many years in use.



If the boiler is mounted on the wall, the space below can be used for a Vitocell DHW cylinder.

### Vitocell 100 with Ceraprotect enamel coating

The Vitocell 100 with Ceraprotect enamel coating meets all the requirements for convenient, economic DHW heating, and is among the market leaders in the area of enamelled DHW cylinders. The Ceraprotect enamel coating provides the DHW cylinder with secure and lasting protection against corrosion.

### Take advantage of these benefits

- Vitocell 300 made from stainless steel.  
Capacity: 130 to 500 litres
- Dual mode and multi-mode DHW cylinders for the integration of solar thermal systems for DHW heating and central heating backup
- Vitocell 100 with Ceraprotect enamel coating. Capacity: 80 to 1000 litres
- Internal indirect coils stretching right to the cylinder floor heat up the entire water content
- Low heat losses through highly effective thermal insulation

### Vitocell 300-W

- 1 Cylinder body made from high grade stainless steel
- 2 Low heat losses through highly effective thermal insulation





The new Vitotronic control unit makes regulating the gas condensing storage combi boilers particularly easy.

## DESIGN PLUS

The Vitotronic control units have already been awarded a design prize.



The floorstanding Vitocrossal 300 gas condensing storage combi boiler also has the Vitotronic 200 or Vitotronic 300.

## Vitotronic – everything perfectly under control

With the digital Vitotronic control unit, using your Viessmann boiler is as simple as making a phone call.

### Vitotronic – technology that thinks for you

Vitotronic control units provide you with every opportunity for really convenient heating, regulated to suit you personally. Once adjusted to your needs, the Vitotronic runs many functions automatically and saves a great deal of energy. The clear Vitotronic user interface with backlit keys and a large screen with plain text display, makes individual adjustments easy.

### Options for the future

The Vitotronic control unit is designed to accommodate future modifications. Should you wish to extend your home in the near future, or link solar collectors to your heating system, the Vitotronic will always keep up with the times.

### Saving energy made easy

The Vitotronic automatically changes over between winter and summertime, and responds to outside temperature fluctuations as a weather-compensated control unit. All convenience functions, such as the party button which cancels the energy-saving night setback, and the economy and holiday programs, can be called up quickly and easily at the touch of a button – either on the boiler itself, or by using the optional remote control from your living room, which has an identical user interface.



The new Vitotrol 300A is a convenient remote control unit to control your boiler from any room in your apartment or house.

Function overview	Vitotronic 100	Vitotronic 200/300
Reacts to changes in room temperature	■	–
Reacts to changes in outside temperature	–	■
Switching times for central heating and DHW heating	–	■
Switching times for central heating only	■*	■
Automatic summer/wintertime changeover	–	■
Party key (extends heating mode)	■*	■
Economy key (short-term temperature setback)	■*	■
Holiday program (long-term temperature setback)	■*	■
Small display with symbols	■	–
Large plain text display	–	■
Energy saving functions	–	■

\* Only in conjunction with separate Vitotrol 100 clock thermostat (in the living space).





## Everything under control – from wherever you are

**Make use of the particularly convenient TeleControl program from Viessmann to regulate your heating system. Naturally wireless and digital.**

Viessmann TeleControl offers an efficient solution for all heating systems, every type of energy and all applications. With Vitocom, Vitodata and Vitohome, our heating systems can be comprehensively remotely monitored and operated.

You communicate directly with the digital Vitotronic control unit, which can be matched to your individual requirements. This increases convenience, improves security and additionally saves energy. Thanks to remote diagnosis, your heating contractor can ensure reliable heating operation.

### Vitocom 100

Vitocom 100 is the easy way to remotely monitor and control your boiler via your mobile phone. This remote control is ideal for detached and two-family houses. It's also suitable for holiday and weekend houses that are not occupied all the time. On your way there, start up the heating system via your mobile and set the required temperature. It could hardly be any simpler or more economical.

### Vitocom 200 and Vitodata 100

If you want to combine the highest levels of convenience and security, the Vitocom 200 is the right solution. This attractively-priced version offers ideal conditions for comprehensive data communication – perfect for private homes and smaller commercial buildings, such as workshops or surgeries. To operate the independent remote control unit, you will need a standard PC or a smartphone.

### Vitohome 300

Vitohome 300 is the ideal solution for centralised home automation. Set the precise temperature for every room and heat only where necessary and required. In combination with an advanced condensing boiler, this means you can save even more energy and money.

Vitohome 300 is easy right from the start. Components communicate by wireless signals, making it ideal for retrofitting, as no wiring is required.

The heating system does not require any expensive conversions either. The Vitohome 300 fits perfectly, anywhere a Vitotrol 300 can be connected to the boiler.

The system is based on the European KNX communication standard. This enables additional functions to be added with ease – even at a later stage. Your electrical wholesaler will offer you matching devices, such as window contacts, smoke detectors or controls for lighting and blinds. They offer optional simulation of a presence, and panic circuits. The result is not just improved convenience, but also a higher level of security.



Vitohome 300 – the simple and convenient centralised home automation system controls the temperature curve in every room subject to demand, thus saving considerably on heating costs.





VIESMANN

4

5



## Vitaset – the complete accessories package

Expansion vessels, pipework, pumps, filters and valves – Vitaset offers you all the accessories you need for your Viessmann heating system.

With the Vitaset range, Viessmann provides you with all the components required for a domestic heating system, from a single source. The advantage to you: Everything matches and can be combined into a single homogeneous system that meets your individual requirements. What's more, your ideas can be implemented swiftly and safely, as all the parts are made available quickly and directly to your Viessmann heating contractor and are of the highest quality.

Something that all components of the extensive range of accessories from Viessmann share is the use of high grade, tested materials and perfect manufacture – this ensures that they provide truly safe and reliable solutions.

Vitaset – this is innovative technology, where all components interact perfectly. Ask your local Viessmann heating contractor to visit you on site. They will be happy to advise you about the many application options using Vitaset.

### Product range

#### Heat generation

- Expansion vessels
- Safety equipment and hydraulic accessories
- Small softening system for heating water
- Stainless steel flue systems

#### DHW heating

- Drinking water filters
- Expansion vessels
- Safety valves
- DHW circulation pumps

#### Heat distribution

- Valves
- Heating mixers
- Circulation pumps

#### Heat transfer

- Universal, flat panel and bathroom radiators, plus specific accessories
- Thermostatic valves
- Underfloor heating systems





Vitoset offers you all the components you need to modernise your heating system.

## System accessories from Viessmann – complete heating systems from a single source

The Vitoset range offers you products from a single source to operate your heating system in complete safety.

Every Vitoset product meets the high quality demands you have come to expect from Viessmann. So when installing your new heating system, don't settle for anything less. The accessories range is ideally matched to the heating system. Here is an overview:

### **Universal radiators**

You can recognise the quality of these radiators by their high-grade, long lasting paint finish.

Thanks to their neutral finish in white RAL 9016, our universal high output radiators will blend easily into any room. On request, all universal radiators can also be supplied in special colours. The radiators are easy to clean, making them attractive for allergy sufferers. For thorough cleaning, simply remove the top grille.

### Panel radiators

Their brilliant, completely smooth design makes these panel radiators an exceptionally aesthetic design feature, which is subtle yet effective. The technical concept behind them is optimised for the demands of energy-efficient heating. This resistant, plastic-coated surface is easy to clean and gleams in white RAL 9016. The flat panel radiators are easy to clean, making them an attractive choice for allergy sufferers.

### Bathroom radiators

These innovative bathroom radiators with their slender pipe elements look elegant, light and blend into any bathroom. A variety of designs will help you to make your bathroom stylish, and will keep towels nice and warm for you.

Alongside their connection to the heating system, the bathroom radiators can also be operated electrically – a heater rod can provide the necessary output. It's even possible to combine both techniques, i.e. the central heating connection for the heating season, and the heater rod for cooler summer days, when you want to take that early morning chill away.

### Thermostatic radiator valves

Not all thermostats are the same. The use of high grade materials and precise temperature selection give Viessmann thermostats the edge. Last but not least, it is their stylish design that lends your rooms that little extra touch.



Beautifully finished and pleasing to the eye: Vitoset bathroom radiators come in many different shapes and sizes. They also make a stylish design feature.



Greater convenience: Viessmann thermostatic valves enable exact temperature selection, and are characterised by a design that is both elegant and functional.





## With our trade partners, you're in good hands

For Viessmann, proximity to trade partners is the basis of the company's success. You, too, can benefit from their expertise if you choose a new Viessmann gas boiler.

You can receive advice and have access to sales, installation and customer service exclusively via Viessmann trade partners, who are trained regularly by the company, and have in-depth knowledge of its products.

Take advantage of the comprehensive service you can expect from your heating contractor.

### Some service examples

- Free, no-obligation and individual advice, even on site
- Clear calculation of heating cost savings after the modernisation of your heating system, even in combination with solar collectors
- Calculation of the payback period, after which the new boiler will have paid for itself through energy savings
- Calculation of the actual heating and DHW demand for your household or property
- In consultation with the flue inspector, checking the chimney for suitability for the new boiler, and whether legal requirements are met
- Information about the economical combination of a new heating system with solar thermal systems for central heating backup and DHW heating
- Up-to-date information about government grant programmes, which could subsidise your new gas heating system and solar thermal system
- Support when applying for subsidies

### **[www.viessmann.de](http://www.viessmann.de)**

Of course, you can always go online to [www.viessmann.de](http://www.viessmann.de) for further details. There, you'll always find the most up-to-date information, and gain an initial overview before your first discussion with your heating contractor.

Click through the interactive guide to select the most suitable Viessmann product for your requirements. Furthermore, we'll keep you updated about subsidy programmes that are sometimes launched at short notice at [www.viessmann.de/foerderprogramme](http://www.viessmann.de/foerderprogramme).





## Attractive finance – invest now and save on heating costs immediately

In cooperation with CreditPlus Bank, we offer particularly affordable terms for the purchase of your new heating system. Take full advantage of the attractive Viessmann finance options.

With the Viessmann financial model, you can start saving straight away, and turn your plans into reality. The unbureaucratic, fast and reliable process makes your modernisation project easier, and your financial planning remains flexible. The special advantage to you is that with these low-cost terms and conditions, you generally save much more on heating costs than you spend on finance.

Please note: The finance application must be made before the heating system is purchased. Retrospective finance agreements are not possible. Detailed information regarding the Viessmann financial model can be obtained from your heating contractor on site. Or visit our website at [www.viessmann.de](http://www.viessmann.de) for further details.



Your local Viessmann heating contractor will be happy to provide you with full details on site, including information about low-cost finance options for your new heating system, which we offer you in cooperation with CreditPlus Bank.



### Terms and conditions to shout about

Viessmann and CreditPlus Bank are now supporting modernisation projects with an affordable finance package: Just 3.99 percent\* effective APR.

\* Over 24 months.



## The comprehensive Viessmann product range



## Individual solutions with efficient systems

Futureproof heating systems for all fuel types and applications.

### The comprehensive Viessmann product range

Viessmann sets the technological pace for the heating industry. The comprehensive product range from Viessmann offers individual solutions with efficient systems for all applications and all energy sources. As environmental pioneers, the company has, for decades, been supplying particularly efficient and clean heating systems for oil and gas, as well as solar thermal and PV systems plus heating systems for sustainable fuels and heat pumps.

The comprehensive product range from Viessmann offers top technology and sets new benchmarks. With its high energy efficiency, this range helps to save heating costs and is always the right choice where ecology is concerned.

All Viessmann products meet the requirements of European Directives regarding the reduction of environmental pollution by emissions. Viessmann feels a long-standing responsibility for the best possible environmental preservation and the maximum protection of natural resources. To this end, the company employs the best available technology for the generation of heat.



Oil



Gas



Solar



Biomass



Natural heat



Wood combustion technology,  
CHP and biogas production

4 – 13,000 kW



Heat pumps for  
brine, water and air

1.5 – 1500 kW

Air conditioning  
technology

System  
components



The comprehensive Viessmann  
product range: Individual solutions  
with efficient systems for all energy  
sources and applications

## Individual economical solutions

Viessmann offers the right heating system for any demand – wall mounted and floorstanding, in individual combinations, both futureproof and economical. Whether for detached or two-family houses, for large residential buildings, for commerce and industry or for local heating networks. It makes no difference whether the system is intended for modernisation or new build.

Viessmann develops and produces innovative heating systems, which demonstrate top quality, energy efficiency and a long service life. Many of these products have become milestones of heating technology.



Detached houses



Apartment buildings



Commerce / Industry



Local heating networks





It's convenient to find out more from home: Viessmann online offers detailed information about products, subsidy opportunities and services.

## Always there for you

Viessmann is a family business, operating globally. In constant contact with associates, the company develops innovative solutions – always with your wishes and requirements in mind.

Viessmann contacts are your competent and enthusiastic local points of reference, and will be happy to support you with any questions about heating and modernisation. You are best advised to arrange a personal consultation. Your Viessmann heating contractor will be happy to help!

### **Viessmann online**

Further information regarding Viessmann products and their capacities, see [www.viessmann.de](http://www.viessmann.de).

There you can obtain information on all Viessmann products.



## www.viessmann.de

### Quick help via the internet

Do you have questions about Viessmann products or on the subject of heating? At [www.viessmann.de](http://www.viessmann.de), you can find comprehensive information round the clock on all Viessmann heating systems and their output levels, a technical lexicon and much more.



### Subsidy programmes

For current information about subsidies that are available to you when you choose an environmentally responsible heating system from Viessmann, see [www.viessmann.de](http://www.viessmann.de).

Furthermore, you can obtain individual professional advice from all Viessmann sales offices or directly from your heating contractor.



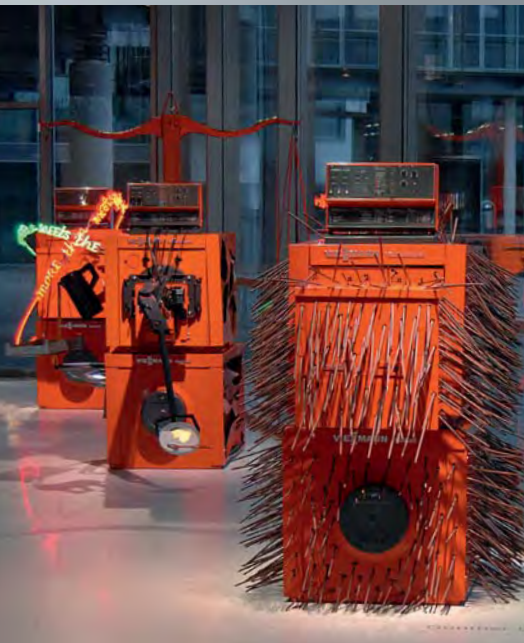
### Your local contact

Are you still trying to find Viessmann contacts in your area? Use the quick search function at [www.viessmann.de](http://www.viessmann.de).

Simply click on "Partner vor Ort" and in a few steps you will find your contact.



The company



## The Viessmann Group

For three generations, the Viessmann family business has been committed to generating heat conveniently, economically, with environmental responsibility and in accordance with demand.

With a number of outstanding product developments and problem-solving solutions, Viessmann has created milestones which have frequently made it the trailblazer and trendsetter for the entire industry.

Viessmann's orientation is decidedly international. It maintains 17 factories in Germany, France, Canada, Poland, Hungary, Austria, Switzerland and China, sales organisations in 37 countries, plus 120 branch sales offices worldwide.

### Members of the Viessmann Group

Viessmann is a family business that has financed its growth almost exclusively with its own resources. In more recent times, company takeovers have also contributed to its growth. Today, members of the Viessmann Group include the wood combustion specialists, KÖB and Mawera, the heat pump manufacturer, KWT, the manufacturer of combined heat and power units, ESS as well as BIOFerm and Schmack as market leaders in biogas systems.

### Skilful workforce

Initial and ongoing training is becoming ever more important. As long ago as the 1960s, the company set itself the task of offering a programme of further training to its skilled contractors.

Today Viessmann maintains a modern information centre at its company head office in Allendorf (Eder), that is second to none. Every year at the Viessmann academy, more than 70,000 contractors bring their knowledge right up to date.

### Model project "Efficiency Plus"

As part of a model project, Viessmann has implemented a sustainability concept that links economic actions with ecological and social responsibility. It encompasses the generation and consumption of energy and the resource-efficient production in the Allendorf (Eder) factory. As a result, the amount of fossil fuel consumed at the factory has been cut by 40 percent compared to previous levels, and CO<sub>2</sub> emissions have been reduced by a third.

### Responsibility

Viessmann is committed to fulfilling its environmental and social responsibilities. The company employees form a team acting on a global footing. This team is defined by the loyalty, reliability and the responsible actions of each individual. We ensure all our processes are environmentally compatible and encourage the use of renewable forms of energy. Furthermore we take an interest in economics, art and culture and have for many years engaged in successful international sport sponsorship.



For its commitment to climate protection and efficient use of resources, Viessmann won the German Sustainability Award 2009.

## Viessmann Group





climate of innovation

The Viessmann Group  
D-35107 Allendorf (Eder)  
Telephone +49 6452 70 -0  
Fax +49 6452 70 -2780  
**[www.viessmann.com](http://www.viessmann.com)**

Your heating contractor: